



&



Malcolm Hughes Chartered Land Surveyors

Presenter: Stuart Gilling BSc MBA MRICS
Managing Director



Agenda

1. Company Overview
2. What do Land Surveyors do?
3. Survey Tasks and Demonstrations
4. Questions

Ogilvie
Group Ltd

ESTABLISHED IN

1953



TURNOVER CIRCA

300m



ogilvie
FLEET



ogilvie
CONSTRUCTION



MALCOLM
HUGHES



ogilvie
HOMES

ND

NET-DEFENCE



MALCOLM HUGHES

Established in 1977

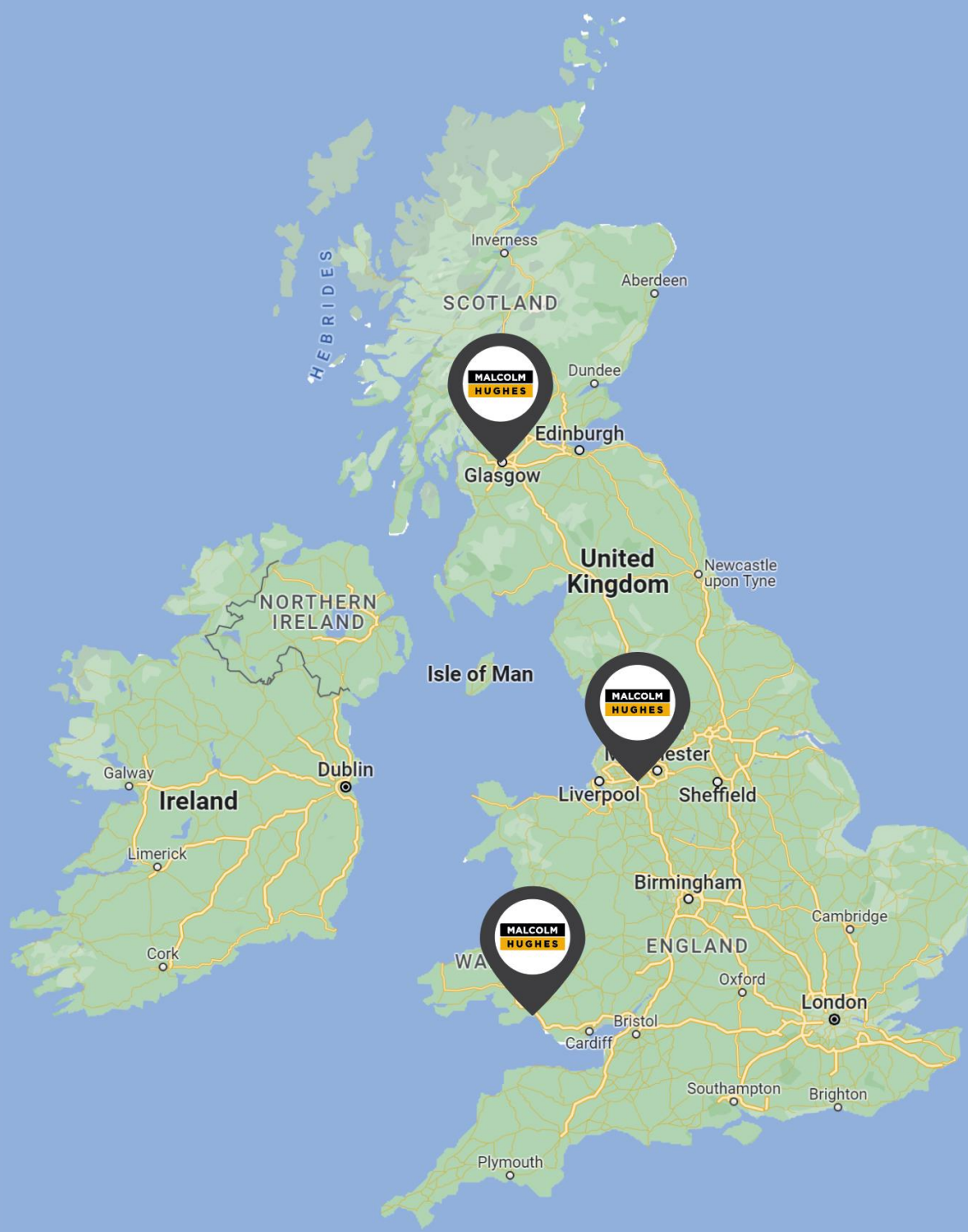
Offices – England, Scotland & Wales

£8 + million turnover

Over 100 employees offering nationwide coverage

Chartered Land Surveyors

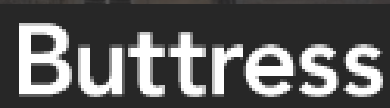
Operational throughout UK and beyond







Existing Clients





Who am I?

- I was a Cub and a Scout.
- I went to the 19th World Scout Jamboree in Chile in 1998.
- Professional Land Surveyor for 20 years
- Chartered Surveyor for 6 years
- Company Director for 3 years
- Problem Solver for 35 years
- Outdoors Person for 41 years



Stuart Gilling BSc MBA MRICS
Managing Director MHLS

What do Land Surveyors do?



What is
Geospatial
Engineering?









Laser Scanning

- 3D laser scanning accurately measures and captures a “point cloud” of 3D coordinates.
- Remotely capture data from sites with limited access such as motorways, railways, quarries, bridges and building structures
- Desktop decision making using state of the art software to view, measure and model from point cloud
- Can reduce costs and delays for as built surveys on live construction sites
- Benefits include **speed**, **safety** & **accuracy**





Building Information Modelling (BIM)

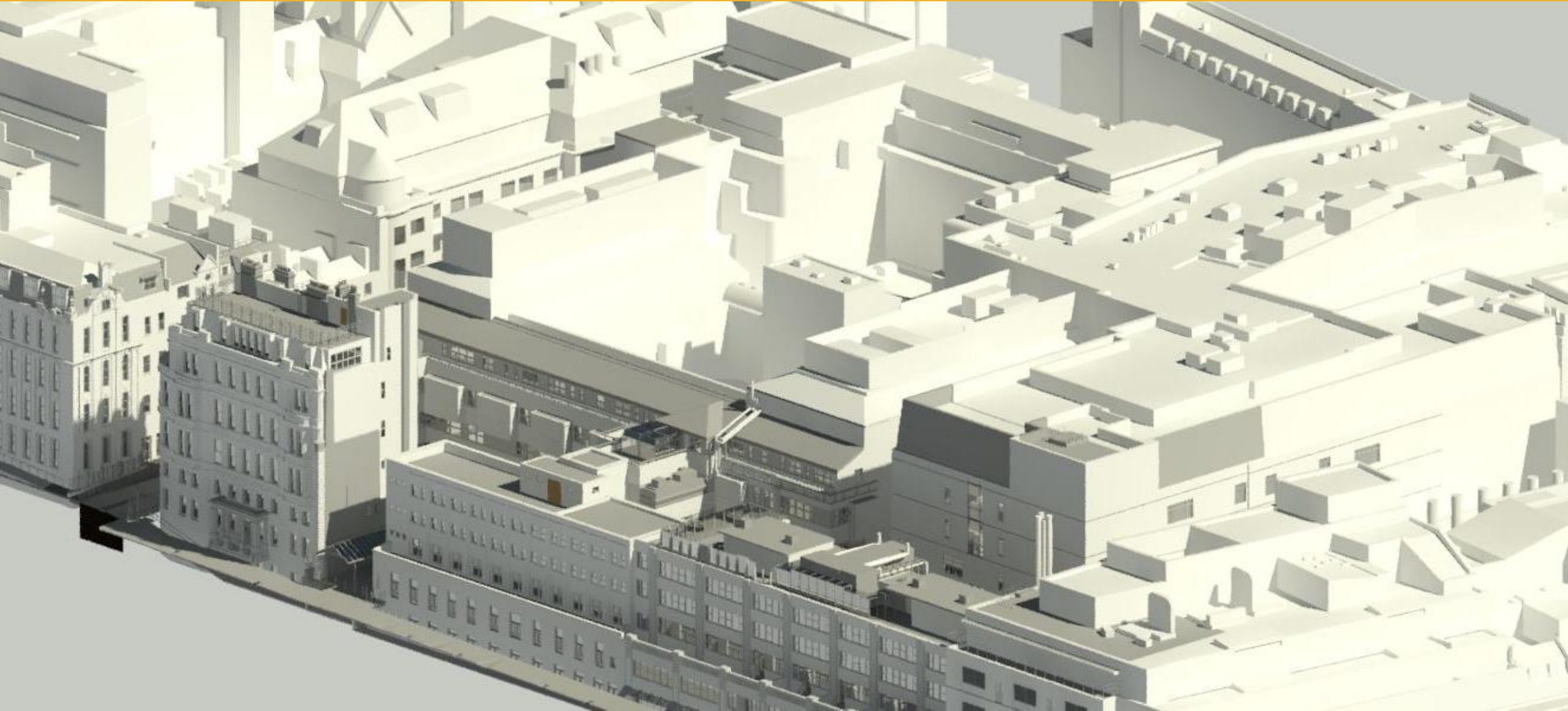
The principal role of our company with regards to BIM is to provide accurate surveys which can contribute, update and provide further information in the BIM process.

At MHLS we are proud to hold a kitemark for BIM – ISO 19650

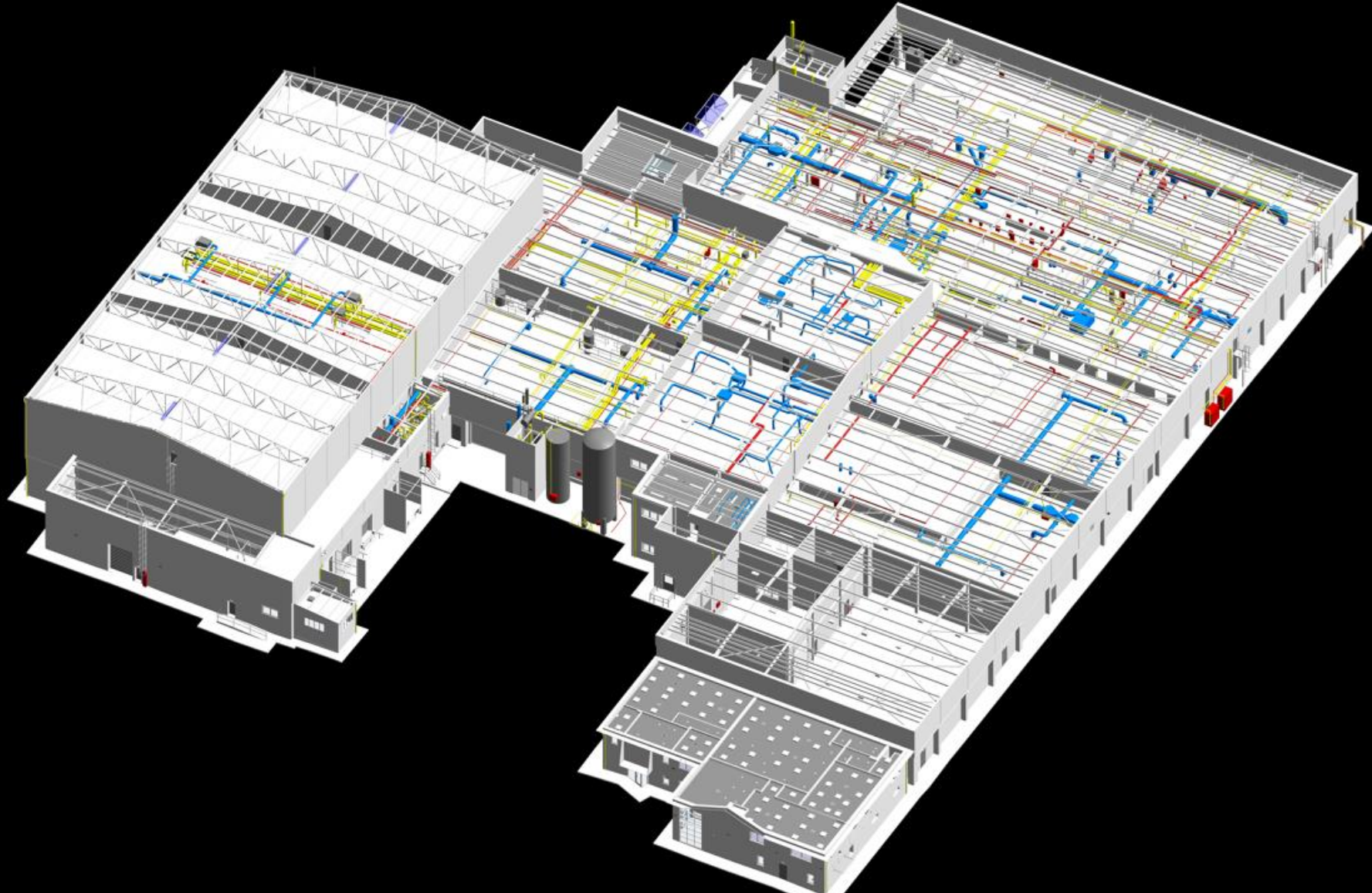
Government projects >£2million are required to use BIM during their design process



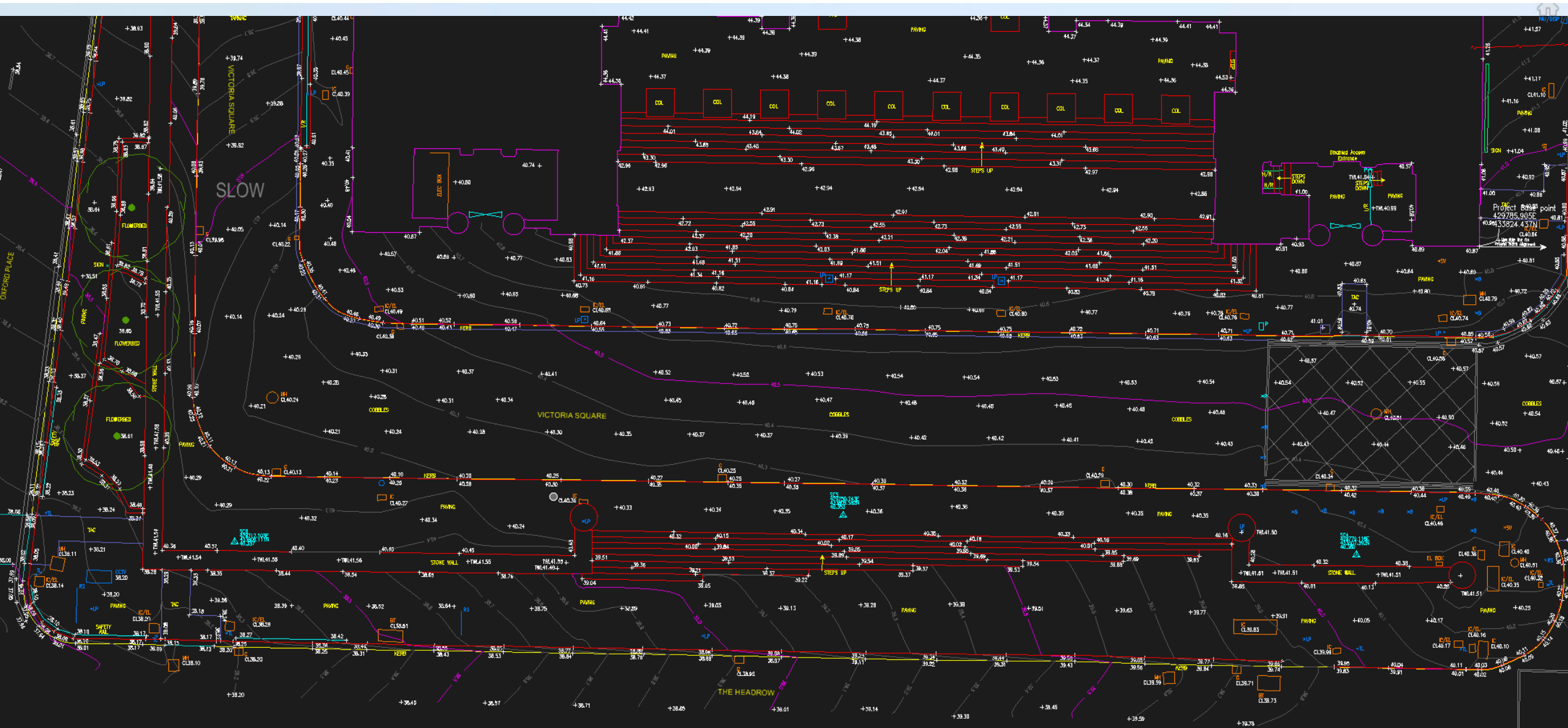
3D Modelling & BIM



3D Modelling & BIM



3D Modelling & BIM



Task 1



Measured Floorplan Task

FLOOR 2

Using a laser distance measuring tool, graph paper, ruler and pencil produce a scaled plan of a floor of this building.



Task 2



3D Laser Scan – Tripod Mounted Scanner

Using a tripod mounted 3D
Laser Scanner capture a
complex dataset of this
building...

Task 3



3D Laser Scan – Handheld Scanner

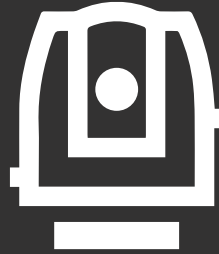
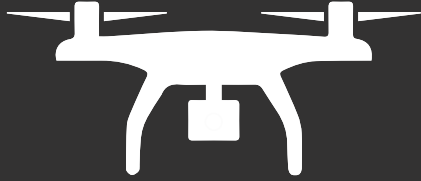
A person is standing in a modern building interior, holding a handheld 3D laser scanner. The building features a complex, curved ceiling with a grid of white structural elements and large windows. The floor is made of light-colored tiles. The person is wearing a dark jacket and pants. The scanner is a small, black device. The text "Using a handheld 3D Laser Scanner capture a complex dataset of this building..." is overlaid on the image.

Using a handheld 3D Laser Scanner capture a complex dataset of this building...

3D Laser Scan – Handheld Scanner



Questions?



Thank you

For more information, visit:
www.malcolmhughes.co.uk

SURVEY/THIS