



NEWSLETTER

The Geospatial Edge

Helping project stakeholders unlock the full potential of geospatial surveys for efficiency, accuracy, and value.



THE SURVEY
ASSOCIATION

The Geospatial Edge - edition 18

Reclaiming Geospatial: Why the Sector Must Unite — Part 2

Andy Beardsley MRICS

At the 46th TSA AGM in Twickenham Stadium, the UK geospatial sector, represented by The Survey Association members, formally launched the Unity Charter – a coordinated national campaign designed to raise awareness, strengthen recruitment, influence policy, and, critically, establish a unified voice for the profession.

Part 1 explored why that moment is necessary. Part 2 addresses the more uncomfortable reality: what happens when we do nothing?

The Cost of Getting It Wrong

By the time most people realise there is a problem with a survey, the consequences have already taken hold.

The data has been trusted. The design has been developed. Models have been coordinated. Procurement decisions have been made. Construction is either underway or complete.

At that point, the question is no longer whether the survey was correct.

It is how much the error is going to cost.



The Hidden Cost Beneath the Programme

There is a persistent perception within the built environment that surveys are a preliminary activity – something to be completed early, signed off, and moved past as quickly and efficiently as possible.

In procurement terms, they are often treated as a cost line.

In reality, they are something very different.

They are the reference point upon which every subsequent decision depends.

And when that reference point is wrong, the consequences do not remain contained. They propagate. Through design. Through coordination. Through fabrication. Through construction. Through operation.

Often silently at first. Then all at once.

Apartment Layouts

Entire apartment layouts that do not align with the structural frame they were designed around.

Cladding Systems

Manufactured to millimetre tolerances, only to discover the geometry they were based on was fundamentally incorrect – resulting in financial exposure approaching £1 million.

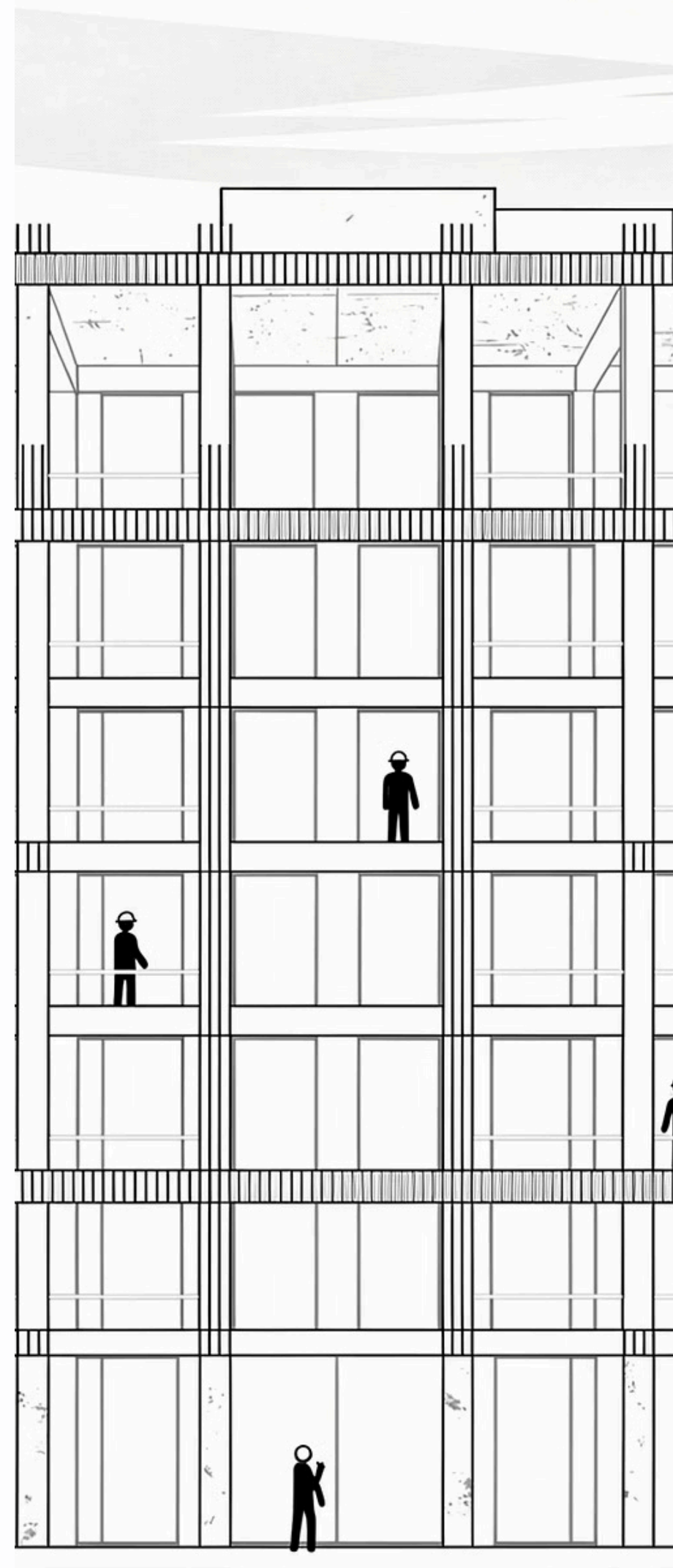
Critical Utilities

Never captured, leading to avoidable strikes on water mains and fibre networks.

Housing Developments

Built to incorrect levels because the underlying control network was flawed.

These are not exceptional failures. They are the logical outcome of a system that increasingly assumes accuracy, rather than verifying it.



The False Economy We Continue to Ignore

Despite this, the same pattern continues to repeat.

Survey specifications are reduced. Scope is compressed. Costs are challenged. Time is shortened.

And into that space, a different type of survey begins to emerge.

Control Absent

Control is either absent or inadequately established.

Unvalidated Registration

Point cloud registration accepted without rigorous validation.

Incorrect Coordinate Systems

Applied incorrectly, introducing subtle but critical distortions.

Overconfident SLAM Data

SLAM-derived datasets presented with a level of confidence that exceeds their verification.

Misrepresented Drone Outputs

Described as topographical surveys without a true understanding of ground modelling.

Each of these decisions appears rational in isolation. Each saves time. Each reduces cost.

But collectively, they remove the very mechanisms that ensure reliability.

What is being stripped out is not inefficiency. It is assurance. And without assurance, accuracy becomes an assumption.

Technology Did Not Replace Surveyors — But the Narrative Changed

It would be easy to attribute this shift purely to technology. But that would be too simplistic.

The tools themselves are not the issue. Modern geospatial equipment is extraordinary in its capability. The ability to capture dense, complex datasets at speed has transformed what is possible across the built environment.

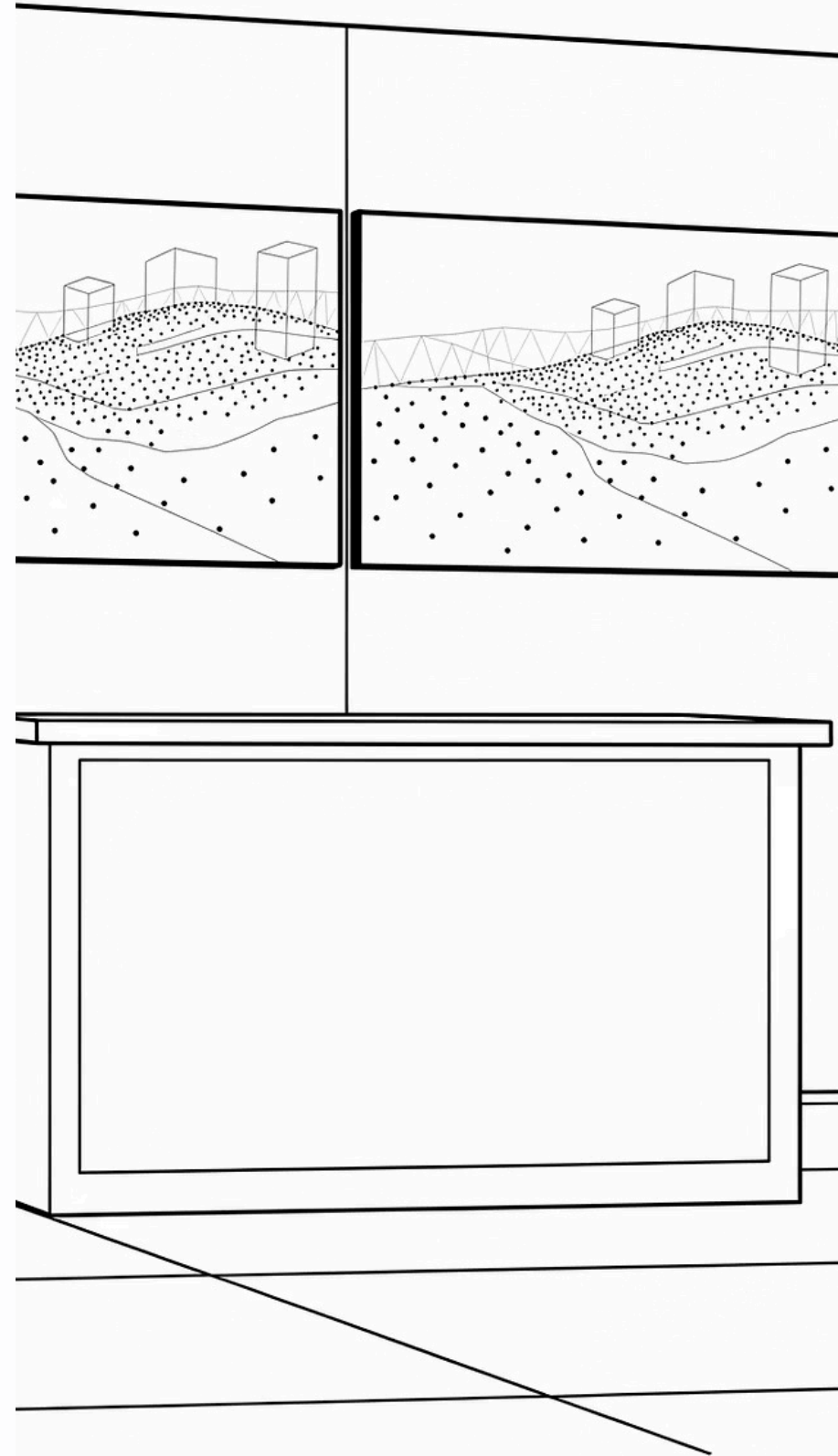
The issue lies in how that capability has been presented.

Over the past decade — and with increasing intensity in recent years — the narrative surrounding geospatial technology has shifted. From enabling professionals, to bypassing them. From supporting expertise, to suggesting it is no longer required.

- Workflows are **simplified**.
- Complexity is **removed**.
- Accuracy is **assumed**.

The implication is clear: that the barrier to entry has been lowered. That the need for specialist understanding has been reduced. That geospatial surveying can be undertaken without geospatial surveyors.

And in the absence of a unified, authoritative counterpoint from the profession, that implication has taken hold.



The Cost of Silence

This is where the issue becomes institutional.

Because the profession has not lacked standards. It has not lacked expertise. It has not lacked capability.

What it has lacked is a coordinated voice.

Across the built environment, there remains a disconnect between what is expected of a professional geospatial survey and what is routinely accepted in practice. There are clear obligations around competence, validation, and accuracy. And yet, these are regularly diluted – not always through negligence, but through a lack of clarity, a lack of challenge, and a lack of visible leadership.

The Fragmentation Problem

Without a single, clearly defined identity, the profession has struggled to communicate its role beyond its own boundaries.

The Consequence

In that absence, others have defined the profession instead – and that definition does not serve the sector or those who depend upon it.

The fragmentation of surveying disciplines has only reinforced this. And in that absence, others have defined it instead.

A Watershed Moment

We are now at a point where highly capable geospatial tools are widely accessible.

Used by individuals with varying levels of training, experience, and accountability.

Encouraged by messaging that prioritises speed over scrutiny, output over verification, and accessibility over accuracy.

This is not a future risk. It is a present condition.

And it is already embedded within the lifecycle of the built environment — from initial concept design through to long-term asset management.



Not Always Immediate

The consequences are not always visible at the point of error.



Cumulative

They accumulate across the lifecycle of assets and infrastructure.



Increasingly Unavoidable

And at a certain point, they become impossible to ignore or absorb.



Why the Charter Matters Now

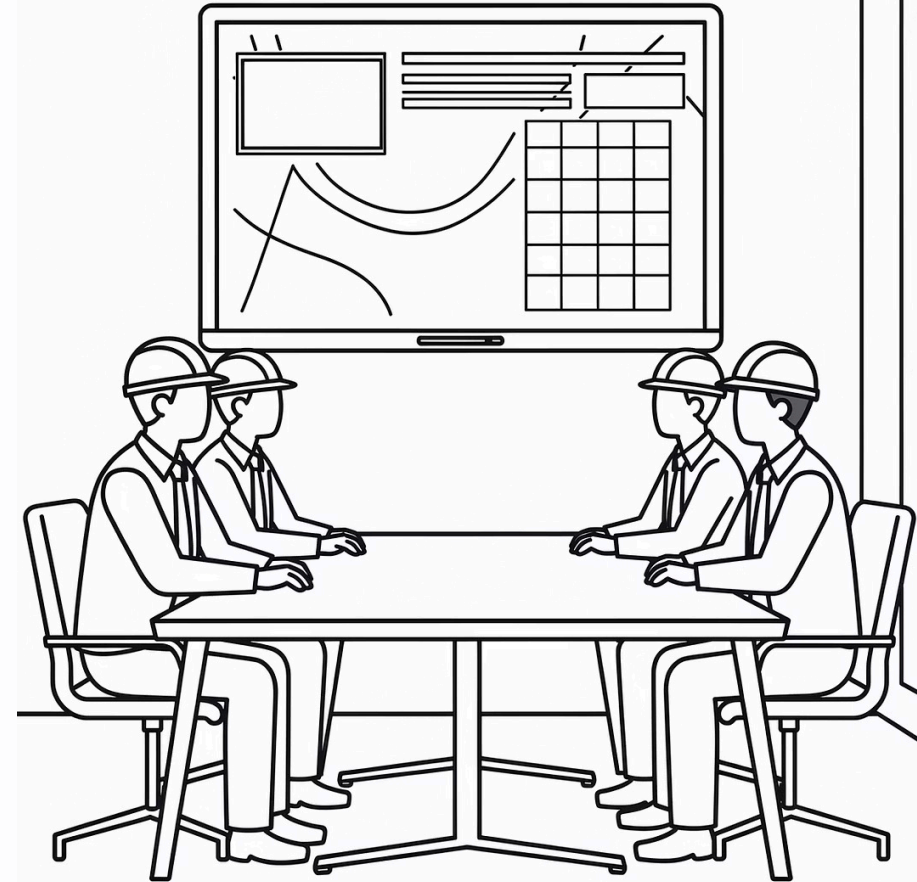
This is the context in which The Survey Association has brought forward the Unity Charter.

Not as a symbolic gesture. But as a strategic intervention.

The Charter is clear in its intent: to raise national awareness of the value of geospatial expertise, to strengthen recruitment and skills development, to influence policy and decision-making, and to unite the sector under a single, coherent message.

Alongside this sits the national marketing campaign – an effort not just to promote the profession, but to clarify it. To articulate what geospatial surveying is, what it does, and why it is critical to the success of the built environment.

This is not about visibility for its own sake. It is about correcting a misalignment that has developed over decades.



Reclaiming the Foundation

Because at its core, this is not a marketing problem.

It is a foundation problem.



Starting Point of Design

Geospatial surveying is the framework upon which all engineering decisions are made.



Reference for Construction

It is the reference that construction relies upon throughout every phase of delivery.



Record for the Long Term

It is the record that supports maintenance, adaptation, and long-term asset management.

It is not one interpretation of "survey" among many.

It is the one that everything else depends on. And yet, we are in a position where that has to be explained. That is the reality the Charter seeks to address.

A Collective Responsibility

The responsibility for doing so does not sit with manufacturers. It does not sit with clients. It does not sit with adjacent professions.

It sits with geospatial surveyors.

Individually, we can continue to deliver high-quality work. We can continue to uphold standards within our own organisations. We can continue to challenge poor practice where we encounter it.

But individually, we cannot redefine a profession.

01

Collective Action

Moving beyond individual practice to coordinated, sector-wide response.

02

Alignment

Shared standards, shared language, shared purpose across all disciplines.

03

A Shared Voice

One that is visible beyond the profession itself – reaching clients, policymakers, and adjacent industries.

That is what the Unity Charter represents.

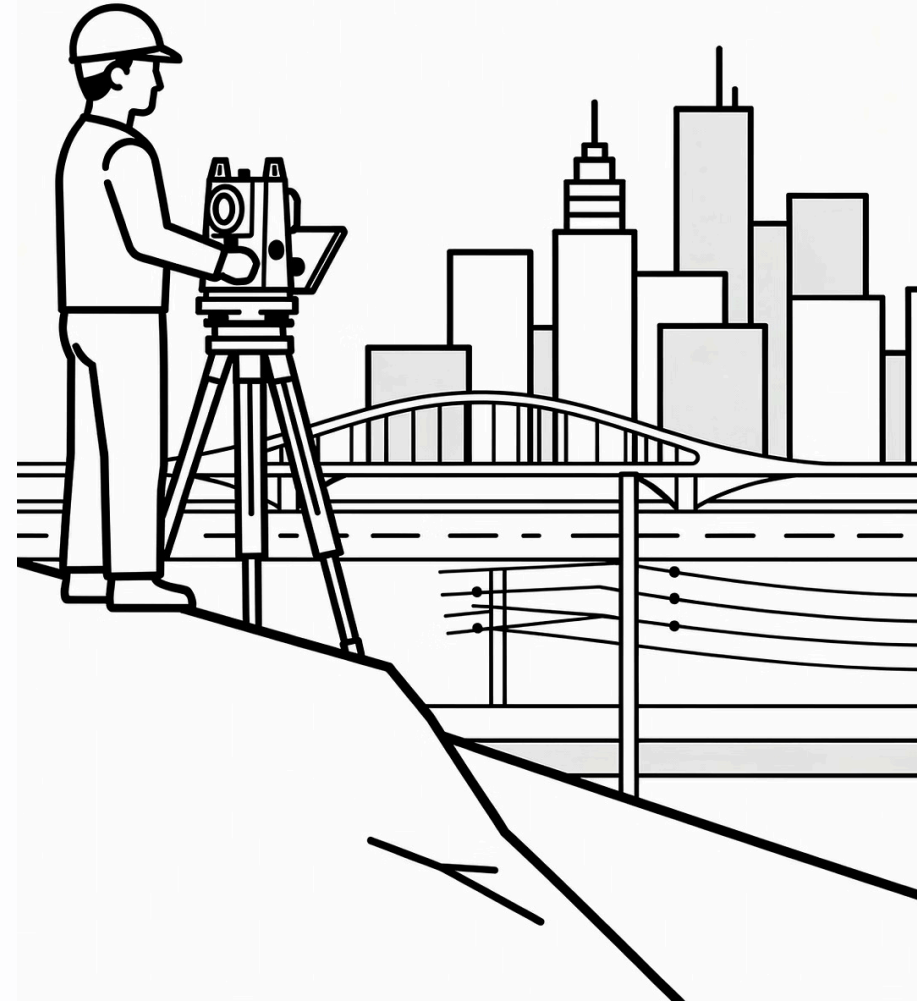


The New Beginning

The 46th TSA AGM was not just another date in the calendar.

It was a moment of acknowledgement.

An acknowledgement that the profession has reached a point where it must reassert itself. Where it must move from being relied upon to being recognised. From being assumed to being understood. And from being fragmented to being united.



A Call to Action

The question is no longer whether geospatial surveying is essential.

It always has been.

The question is whether we are prepared to act like it is.

1

Define It Clearly

Establish a precise, accessible, and consistent definition of geospatial surveying for all audiences.

2

Communicate It Consistently

A single coherent message across every channel, sector, and interaction.

3

Defend It Collectively

Challenge poor practice. Counter false narratives. Uphold the standards the profession demands.

4

Secure the Next Generation

Ensure those entering the profession do not inherit the same ambiguity we have allowed to develop.

The Unity Charter is not the solution on its own. But it is the first coordinated step toward one.

Because if we do not define what geospatial surveying is, others will continue to define it for us. And the cost of that is no longer theoretical. It is already being built into the world around us.

- The Geospatial Edge** is a LinkedIn newsletter exploring the challenges, opportunities, and future of geospatial surveying in the UK ([please subscribe](#)). **Part 2** has examined what happens when things go wrong – and why the consequences are no longer theoretical.